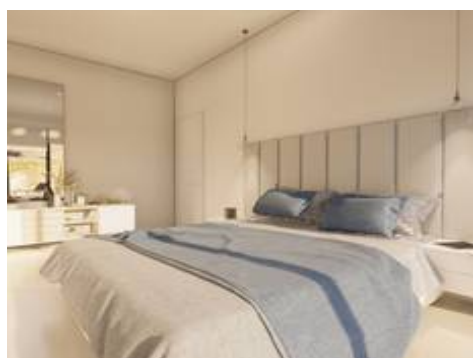


New Development in Benalmadena

475.000 €

3 2 124m² 29m²



Description

New Development: Prices from €475,000 to €475,000. [Bedrooms: 3] [Bathrooms: 2] [Built size: 124m² - 128m²].

This development caters to all your tastes and needs.

The project consists of 32 penthouses and flats with 1, 2 and 3 bedrooms, offering panoramic views of Benalmádena Bay. The project also includes penthouses with 100 m² terraces offering spectacular views.

Our priority is you and your quality of life, which is why we wanted to create homes that are both functional and stylish. Our homes have sea views and south-facing terraces measuring 20 m² on average, both covered and uncovered, on the ground floor.

You will also find an area where you can relax with a pleasant summer swim in your pool, and to keep fit and active, there is a gym with views and green areas.

