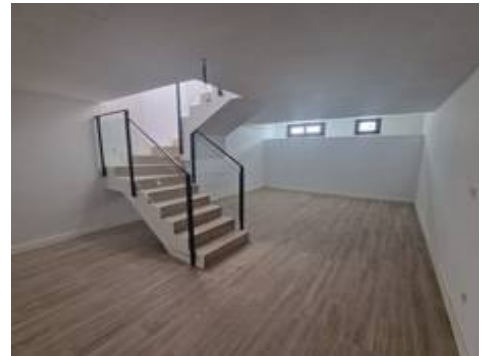




## New Development in Manilva

385.000 €

2 - 3 2 - 3 128m<sup>2</sup> 138m<sup>2</sup>



### Description

New Development: Prices from €385,000 to €490,000. [Bedrooms: 2 - 3] [Bathrooms: 2 - 3] [Built size: 128m<sup>2</sup> - 207m<sup>2</sup>].

#### VILLA 1

207.45 m<sup>2</sup> built on a 240 m<sup>2</sup> plot. It has 3 bedrooms, 3 bathrooms, living room, kitchen, terrace, private garden, private garage for 2 vehicles, basement with natural light and excellent sea views.

#### SEMI-DETACHED HOUSE 2

128.25 m<sup>2</sup> built on a 153 m<sup>2</sup> plot. It has 2 bedrooms, 2 bathrooms, living room, kitchen, terrace, private garden, parking area within the plot, basement with natural light and excellent sea views.

#### SEMI-DETACHED HOUSE 3

128.25 m<sup>2</sup> built on a 138 m<sup>2</sup> plot. It has 2 bedrooms, 2 bathrooms, living room, kitchen, terrace, private garden, parking area within the plot, basement with natural light and excellent sea views.

#### SEMI-DETACHED HOUSE 5

128.25 m<sup>2</sup> built on a 156 m<sup>2</sup> plot. It has 2 bedrooms, 2 bathrooms, living room, kitchen, terrace,...













